

# **Kansas Child Support Guidelines**

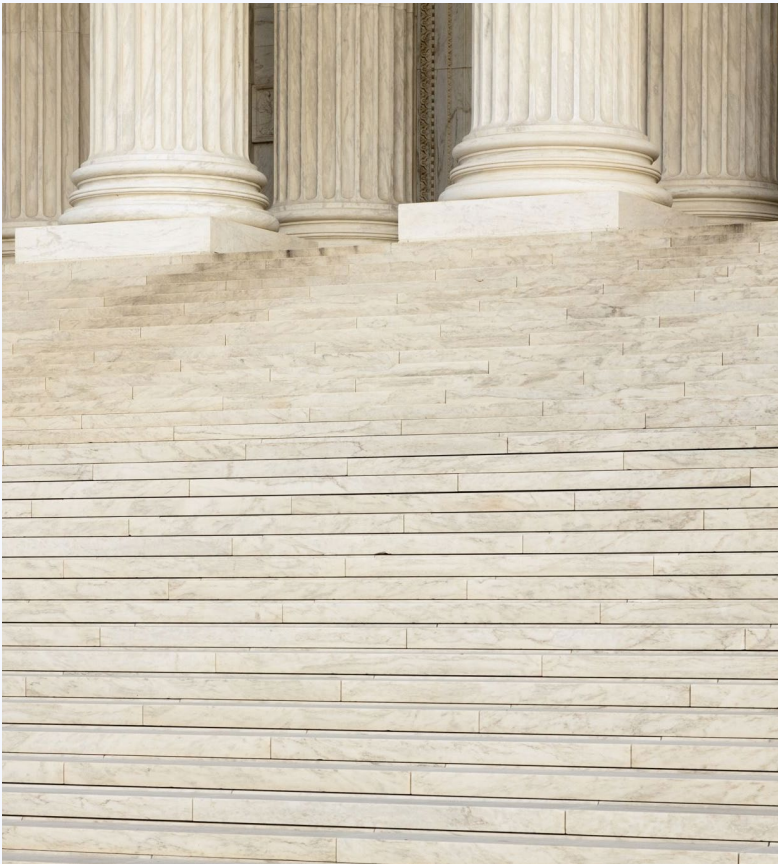
Amy Raymond

Chief of Trial Court Services

Office of Judicial Administration



## Overview



Authority

2024 changes

The Child Support Worksheet

2025 changes

The next review session

**Remember, always consult the source!**



# Authority

- 45 CFR 302.56
- K.S.A. 20-165
- Supreme Court Rule 1301



# The Committee

## Quadrennial Review

- Committee reviews the guidelines every 4 years
- Requests comments and suggestions
- Meets “monthly” for 18 to 24 months
- Recommends revisions to Supreme Court
- Formal comment period



# The Committee

Lawyers

Judges

Payor/Payee  
representatives

Tax/Accounting

DCF

OJA Staff

Economist

Open Meetings



# Resources

- [Child Support Guidelines](#)
- [Forms and supplemental materials](#)
- [Prior Child Support Guidelines](#)
- [Child Support Guidelines Advisory Committee](#)



# Revisions

- 2023-RL-080 – effective January 1, 2024
- 2024-RL-062 – effective August 1, 2024
- 2024-RL-068
- 2024-RL-073
- 2025-RL-035 – effective May 1, 2025
- 2025-RL-121 – effective July 1, 2025



## Changes made every review session



- Economic Data
- New child support schedules
- Language cleanup



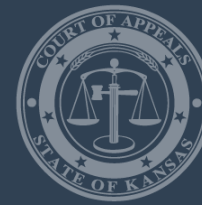
## Economic Data

COVID delayed updating of data:  
next update is being conducted  
now

Recognize the effects of inflation  
since 2017

Tables revised





## January 2024 changes



- Restructure and “plain language”
- New language regarding irregular income
- Multiple Family Adjustment
- Direct Expense Formula

# Kansas Judicial Branch



Simplified / Plain Language

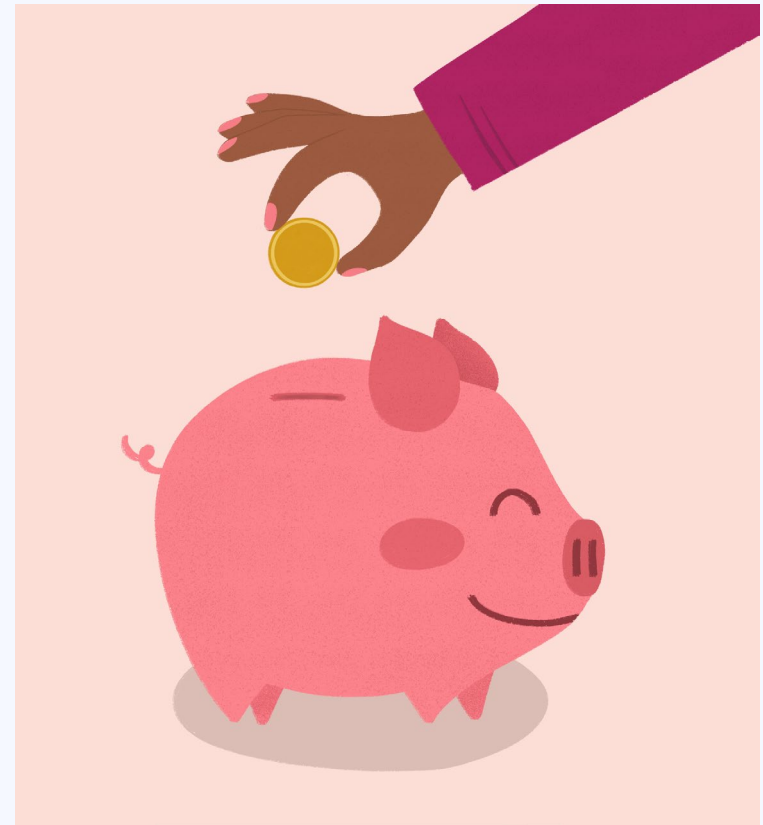
Reordered to follow the worksheet

Restructure – like concepts together



## Irregular Income

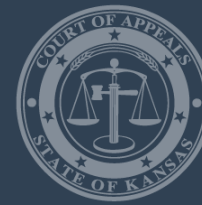
In situations where a payor receives periodic bonuses, the court or the parties should select a method for the inclusion and payment of additional child support from the gross bonus. Bonus income may be averaged into the monthly gross income, paid as a percentage upon receipt, or distributed in another way as decided by the court or the parties. If bonus income is averaged into the payor's monthly gross income, it must be paid through the Kansas Payment Center as part of the monthly child support obligation unless the court finds there is good cause for direct payments pursuant to K.S.A. 23-3004.





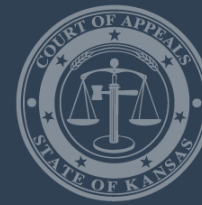
# Periodic bonus income calculations

When a payor receives periodic bonuses, the court or the parties should select a method for the inclusion and payment of additional child support from the gross bonus. There are two optional methods the court or the parties may use. The court or the parties may choose either of these options or a different method, which language should be included in the order.



## Option A: Bonus averaging method

- $(\text{Gross amount of the bonus}/12) + \text{regular monthly income}$
- Must be reported when received and proof of the bonus provided to the noncustodial parent within ten days of receipt
- Inserted on line D-3 for the payor's income for purposes of calculating the child support.
- Becomes part of the monthly child support obligation and is paid to the KPC.



# Option B Percentage of Bonus method

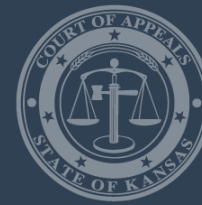
- Calculation
  - $\text{Line N child support} / \text{Line D.1 income} = \% \text{ of child support compared to income}$
  - $\% \text{ of child support} \times \text{gross amount of bonus} = \text{amount to be paid to payee}$
- within ten days of receiving the bonus, the payor must
  - disclose the gross amount to the noncustodial parent
  - provide proof of the gross amount
  - pay the calculated share of the bonus directly to the payee pursuant to K.S.A. 23-3004. These payments do not go through the Kansas Payment Center.
- The payor is responsible for maintaining proof of payment of the percentage of bonus amount.
- The payment of the percentage of bonus amount is considered additional current child support.
- Failure to disclose or pay the percentage of bonus may result in sanctions.



# Multiple Family Adjustment



Multiple Family Application. The multiple-family application may be used to adjust the child support obligation of the parent not having primary residency when that parent has legal financial responsibility for the support of other children who reside with that parent. The multiple-family application may be used **only** by a parent not having primary residency when establishing an original order of child support or an increase in support is sought by the parent having primary residency. However, the court has discretion to allow use of the multiple family adjustment regardless of who files a motion to modify child support. If using the multiple-family application will result in a gross child support obligation (Line D.3 in the Child Support Worksheet) below the poverty level as shown on the child support schedules, the use of the multiple-family application is discretionary. The multiple family adjustment must not be used for children who are already part of another court order.



## Other Changes

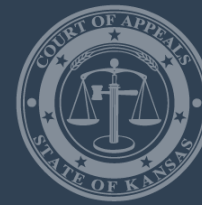
- **Changed the DRA – “Child Support DRA” - no more “short form”**
- **Judicial discretion emphasized**
- **Clarified direct pay language**
- **Reasonable business expenses are not the same as tax deductible expenses.**
- **Families with both primary and shared residency**
- **Health expenses include mental health**



August 2024

**All About Equal Parenting Time**





## August 2024 - Parenting Time Issues Pre 8/1/24



### 3 ways to deal with “non-standard” parenting time

#### Parenting Time Adjustment (<50/50)

- “Formula
- Actual Cost
- Extended Time

#### Shared Expense Plan

- Equal Time
- Written agreement
- ADR process

#### Equal Parenting Time Formula

- Equal Time
- 1 parent pays direct expenses
- Hi - Lo divided by 2



Equal Parenting Time Formula is now the

## **Direct Expense Formula**



## **Why did the committee propose these changes?**

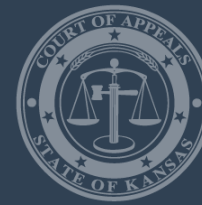
- **Income Shares Model**
  - 1 parent is paying the direct expenses
  - Both parents are paying indirect expenses
- **Insurance and Daycare**
  - Payor was not getting fully reimbursed



## How it changed

- All parenting time adjustments are in one place
- Paying parent pays
  - Proportionate share of direct expenses plus
  - Proportionate share of insurance and daycare
- Requires a change in the child support worksheet





## Worksheet Changes

- All lines are numbered
- All parenting time adjustments are before deviations
- Focus on proportionate sharing of expenses





## NEW SECTION E

### E. Parenting Time or Shared Residency Adjustment

#### 1. Parenting Time Adjustment

a. \_\_\_\_\_ % x Line D.5  
(Parenting time is more than 35% but less than 50%)

\_\_\_\_\_

b. Actual Cost Parenting Time Adjustment

\_\_\_\_\_

c. Extended Parenting Time Adjustment

\_\_\_\_\_

#### 2. Shared residency and written shared expense plan

a. (Higher amount on Line D.5 - Lower amount on Line D.5) divided by 2

\_\_\_\_\_

#### 3. Shared residency with Direct Expense Formula

a.  7% (combined monthly child support less than \$4,690)

b.  10.5% (combined monthly child support more than \$4,690 and less than \$8,125)

c.  15% (combined monthly child support more than \$8,125)

\_\_\_\_\_

4. Total Adjustment (Line E.1.a/b/c or E2 or (E2 + E3))

\_\_\_\_\_



## SECTIONS F, G, H & I

### F. HEALTH INSURANCE

1. Health and Dental Insurance Premium

\_\_\_\_\_

2. Proportionate Shares Health Insurance Premium

\_\_\_\_\_

### G. WORK RELATED CHILD CARE COSTS

1. Work Related Child Care Costs

Amount - Amount x \_\_\_\_\_%

\_\_\_\_\_

2. Proportionate Share Child Care Costs

\_\_\_\_\_

### H. PROPORTIONATE CHILD SUPPORT OBLIGATION FOR EACH PARENT

1  Primary residency with one parent: Total of Line D5 - E4 + F2 + G2

Shared residency with written shared expense plan: Total of E4 + F2 + G2

Shared residency with Direct expense formula: Total of E4 + F2 + G2

\_\_\_\_\_

### I. BASIC CHILD SUPPORT OBLIGATION

1. Credit for Health Insurance and Work-Related Childcare = Line F1 + G1

\_\_\_\_\_

2. Basic Child Support Obligation = Line H.1. - Line I.1

\_\_\_\_\_



# 2025 Changes





# Administrative Order 2025-RL-037

### 3. Formula. The Direct Expense Formula must consist of the following steps:

a) **Step 1:** The amount of the lower adjusted subtotal amount on Line D.5 must be subtracted from the higher adjusted subtotal amount on Line D.5. The resulting figure must be divided by 2 and constitutes the first portion of the formula. This amount is entered on Line E.2.a for the parent with the higher income. Unless otherwise ordered by the court, the parents are presumed to each provide the child's clothing in their own home.

b) **Step 2:** Multiply Line D.4 by the percentage set out on the table below. This amount is entered on Line E.3 for the parent not paying direct expenses.

- 7% if total combined monthly child support income on Line D.2 is equal to or less than \$4,690;
- 10.5% if total combined monthly child support income on Line D.2 is more than \$4,690 and less than \$8,125;
- 15% if total combined monthly child support income on Line D.2 is equal to or greater than \$8,125, or;

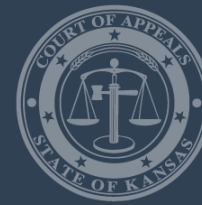
c) **Step 3:** Add the amount from Step 1 and Step 2 to Line E.4 for each parent on the child support worksheet. Along with any applicable adjustments, this is the additional contribution owed by the parent not paying direct expenses.

- Feedback from judges and attorneys that language in the direct expense formula section was unclear
- Worksheet errors primarily when the higher income earning parent is responsible for direct expenses
- Added clarifying language to Section VI.F.3
- Effective May 1, 2025



# Administrative Order 2025-RL-121

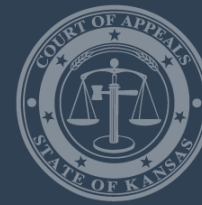
- In response to 2025 House Bill 2062
- Changes
  - Section I.E.6 – party may request information about any qualified retirement plan per K.S.A. 23-3002
  - Section II.B.3 – in situations described in K.S.A. 23-3002(a)(2), the court must take into consideration any qualified retirement plan
  - Section VII.C. – the court may order child support for an unborn child pursuant to K.S.A. 20-165



# What's next?



- Revision meetings will start in August
- Economist review
- Possible child support schedule changes



# Contact/Info

Amy Raymond  
amy.raymond@kscourts.gov  
785.291.3224

Guidelines webpage  
[kscourts.gov/About-the-Courts/Programs/Child-Support-Guidelines](https://kscourts.gov/About-the-Courts/Programs/Child-Support-Guidelines)